

ULLTRALight



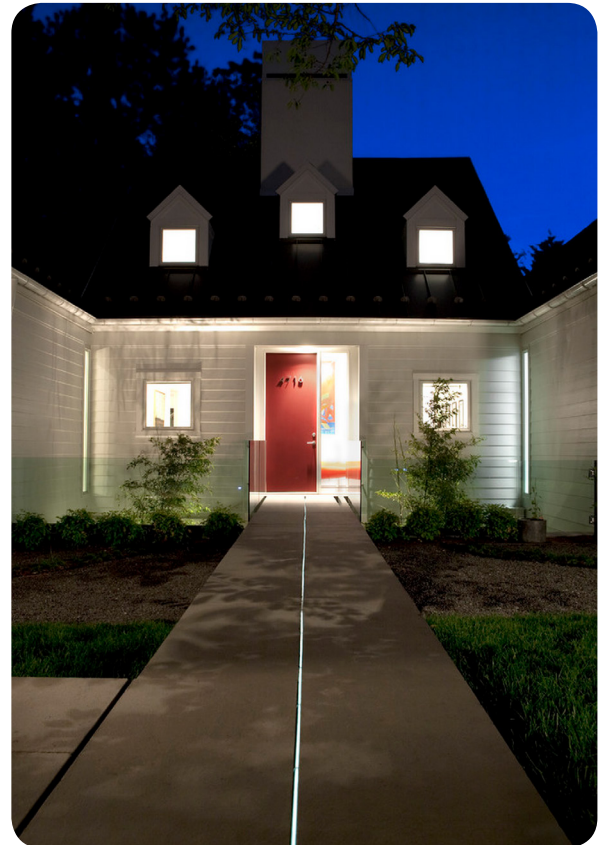
www.ullrich-aluminium.co.nz

www.ullrich.com.au



Linear LED Aluminium Profile System

Ideal for creating professional looking, spot free linear lighting effects



EXLP02 - Linear Profile

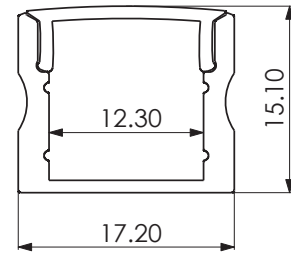


Specifications

Standard Length:	2m
Body:	Anodized Aluminium
Diffuser:	PC (Pmma Opal Matte)
End Cap:	PC
Mounting Bracket:	PC

SKUs (Order Code)

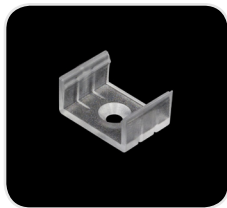
Extrusion	End Cap	Mounting Bracket
EXLP02	ECLP02/ ECLP02H	FBLP02



End Cap & Mounting Bracket (Optional)

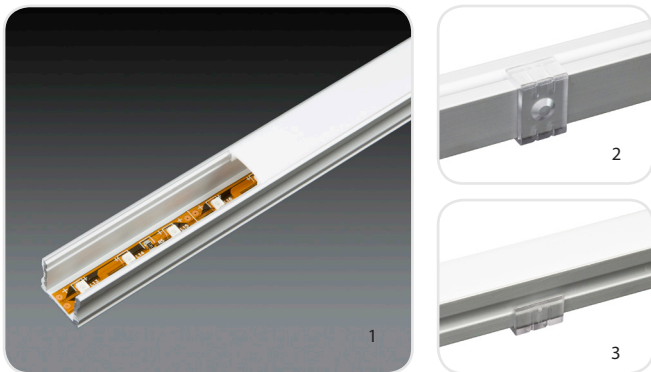


ECLP02
End Cap



FBLP02
Mounting Bracket

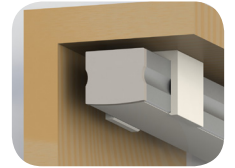
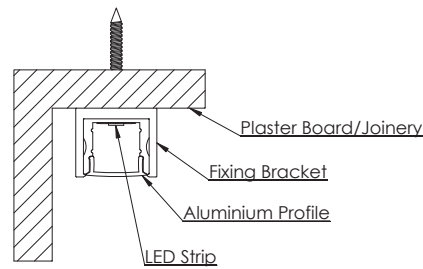
Product Photos



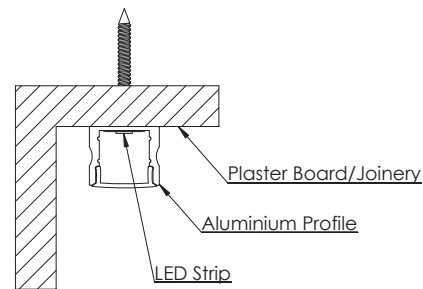
1. EXLP02 with LED strip installed (LED strip needs to be purchased separately)
2. EXLP02 with Mounting Bracket installed (back view)
3. EXLP02 with Mounting Bracket installed (front view)

Installation Guide

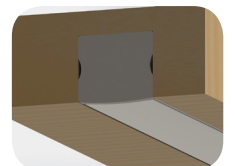
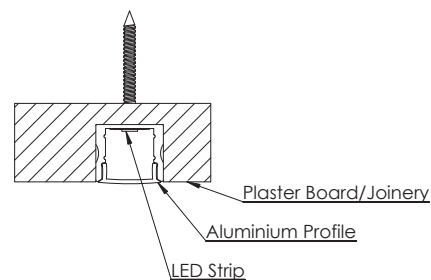
A Clip Mount - Fix the mounting bracket then clip the extrusion onto the mounting bracket



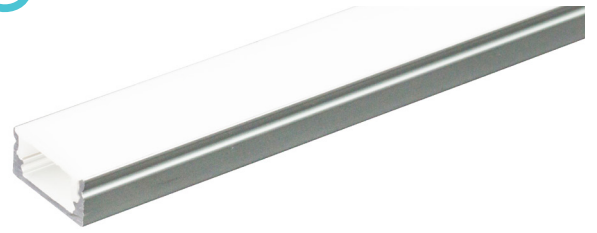
B Surface Mount - Mount by drilling hole through the extrusion and fixing directly onto the wall



C Recess Mount - Mount by drilling hole through the extrusion and fixing directly onto the pre-made channel



EXLP03 - Linear Profile

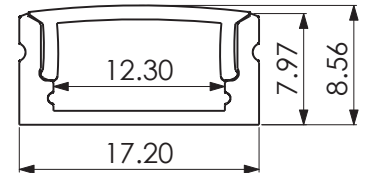


Specifications

Standard Length:	2m
Body:	Anodized Aluminium
Diffuser:	PC (Pmma Opal Matte)
End Cap:	PC
Mounting Bracket:	PC

SKUs (Order Code)

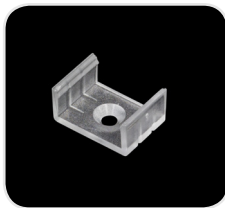
Extrusion	End Cap	Mounting Bracket
EXLP03	ECLP03/ ECLP03H	FBLP03



End Cap & Mounting Bracket (Optional)

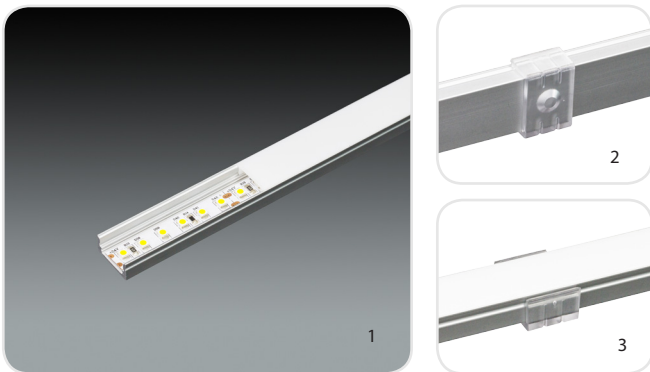


ECLP03
End Cap



FBLP03
Mounting Bracket

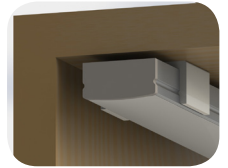
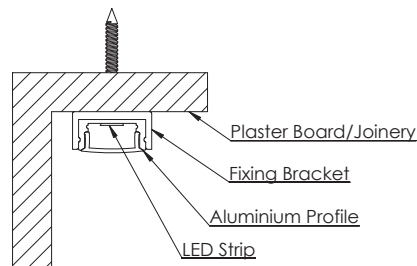
Product Photos



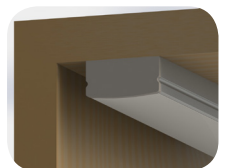
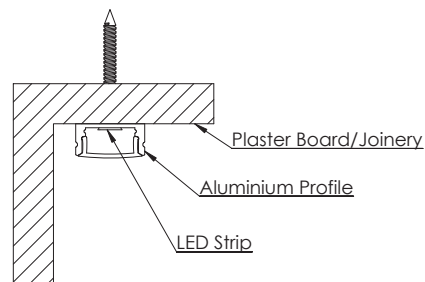
1. EXLP03 with LED strip installed (LED strip needs to be purchased separately)
2. EXLP03 with Mounting Bracket installed (back view)
3. EXLP03 with Mounting Bracket installed (front view)

Installation Guide

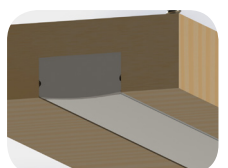
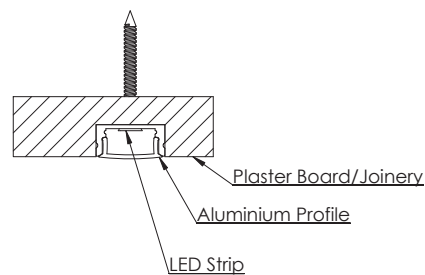
A Clip Mount - Fix the mounting bracket then clip the extrusion onto the mounting bracket



B Surface Mount - Mount by drilling hole through the extrusion and fixing directly onto the wall



C Recess Mount - Mount by drilling hole through the extrusion and fixing directly onto the pre-made channel



EXCR01 - Corner Profile



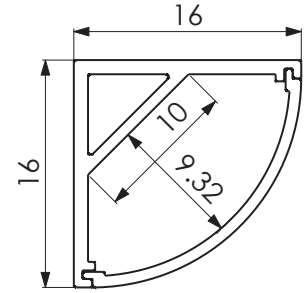
Specifications

Standard Length:	2m
Body:	Anodized Aluminium
Diffuser:	PC (Pmma Opal Matte)
End Cap:	PC
Mounting Bracket:	PC



SKUs (Order Code)

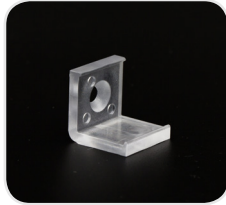
Extrusion	End Cap	Mounting Bracket
EXCR01	ECCR01/ ECCR01H	FBCR01



End Cap & Mounting Bracket (Optional)



ECCR01
End Cap

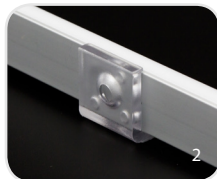


FBCR01
Mounting Bracket

Product Photos



1



2

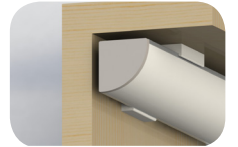
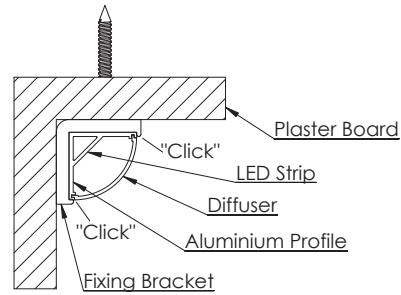


3

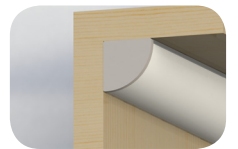
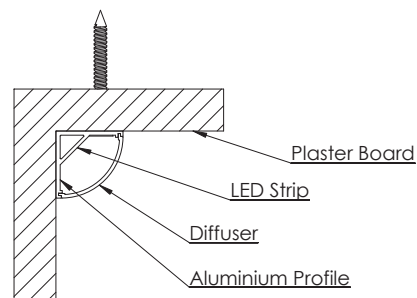
1. EXCR01 with LED strip installed (LED strip needs to be purchased separately)
2. EXCR01 with Mounting Bracket installed (back view)
3. EXCR01 with Mounting Bracket installed (front view)

Installation Guide

A Clip Mount - Fix the mounting bracket then clip the extrusion onto the mounting bracket



B Surface Mount - Mount by drilling hole through the extrusion and fixing directly onto the wall



EXCR02 - Corner Profile

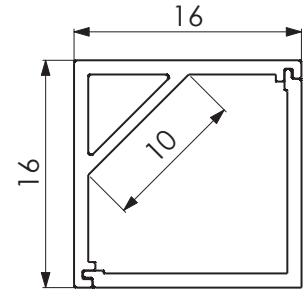


Specifications

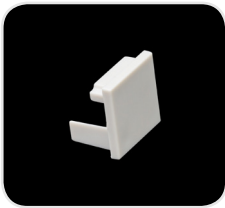
Standard Length:	2m
Body:	Anodized Aluminium
Diffuser:	PC(Pmma Opal Matte)
End Cap:	PC
Mounting Bracket:	PC

SKUs (Order Code)

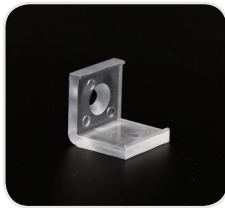
Extrusion	End Cap	Mounting Bracket
EXCR02	ECCR02/ ECCR02H	FBCR02



End Cap & Mounting Bracket (Optional)



ECCR02
End Cap



FBCR02
Mounting Bracket

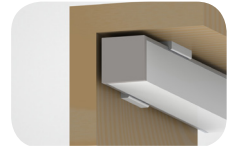
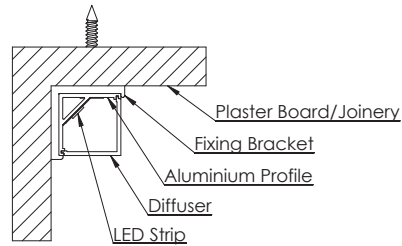
Product Photos



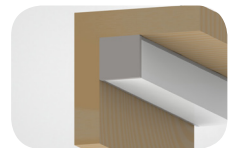
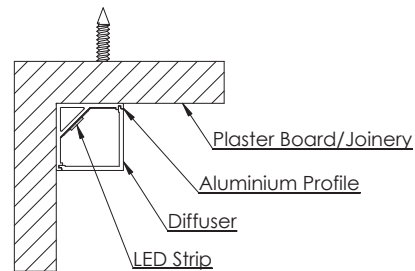
1. EXCR02 with LED strip installed (LED strip needs to be purchased separately)
2. EXCR02 with Mounting Bracket installed (back view)
3. EXCR02 with Mounting Bracket installed (front view)

Installation Guide

A Clip Mount - Fix the mounting bracket then clip the extrusion onto the mounting bracket



B Surface Mount - Mount by drilling hole through the extrusion and fixing directly onto the wall



EXRS01 - Recessed Profile



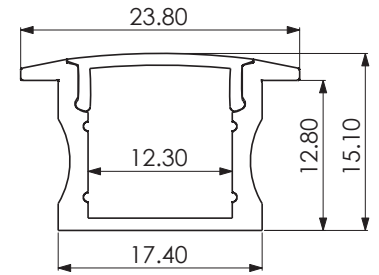
Specifications

Standard Length:	2m
Body:	Anodized Aluminium
Diffuser:	PC (Pmma Opal Matte)
End Cap:	PC
Mounting Bracket:	PC



SKUs (Order Code)

Extrusion	End Cap	Mounting Bracket
EXRS01	ECRS01/ ECRS01H	-



End Cap & Mounting Bracket (Optional)



ECRS01
End Cap

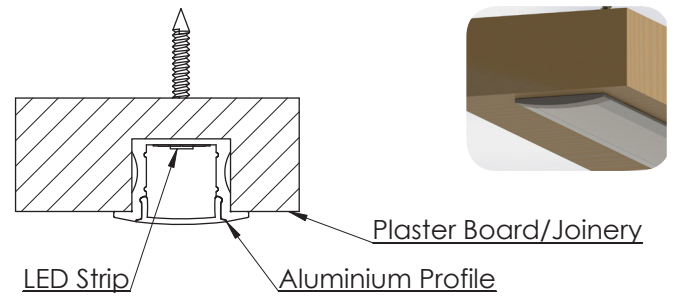
Product Photos



1. EXRS01 with LED strip installed (LED strip needs to be purchased separately)

Installation Guide

A Recess Mount - Mount by drilling hole through the extrusion and fixing directly onto the wall



EXRS03 - Recessed Profile



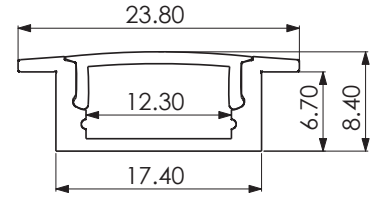
Specifications

Standard Length:	2m
Body:	Anodized Aluminium
Diffuser:	PC (Pmma Opal Matte)
End Cap:	PC
Mounting Bracket:	PC



SKUs (Order Code)

Extrusion	End Cap	Mounting Bracket
EXRS03	ECRS03/ ECRS03H	-



End Cap & Mounting Bracket (Optional)



ECRS03
End Cap

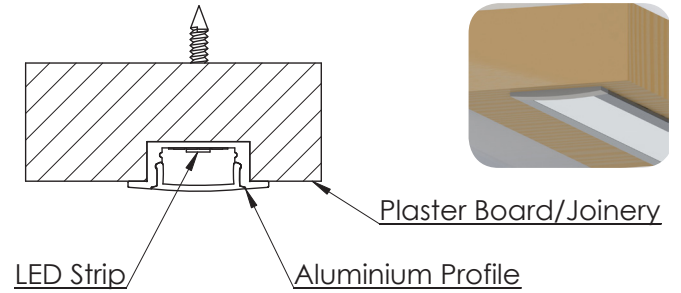
Product Photos



1. EXRS03 with LED strip installed (LED strip needs to be purchased separately)

Installation Guide

A Recess Mount - Mount by drilling hole through the extrusion and fixing directly onto the wall



ULLTRALight

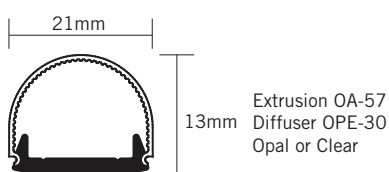
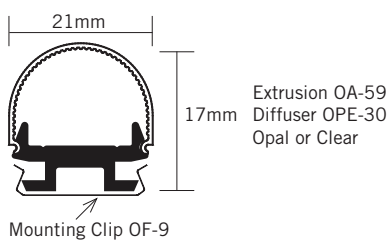
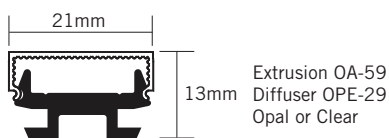
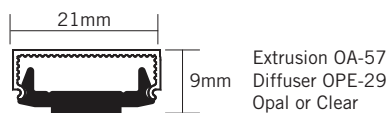
Lighting Component Spec Sheet – Series 4000

The 4000 series we supply both the aluminium extrusion and diffusers as 4.00 long lengths, and the aluminium extrusion can be mill, satin anodised or white powder coat finishes.

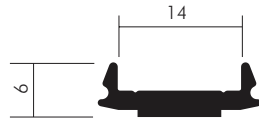
Code OA-57 extrusion can only be fitted either screw fixed or tapped, this can be fitted with either diffusers OPE-29 or OPE-30, end caps can not be fitted to this design, we recommend hot melt glue or sealer

Code OA-59 extrusion is designed to be installed by using the mounting clips Code OF-9. This extrusion can also be fitted with the same diffusers OPE-29 and OPE-30. With this design end caps can be supplied and fitted to the ends of both the flat and radius diffusers.

DESIGNER SPEC'S

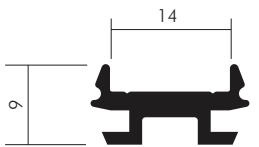


Aluminium Extrusion



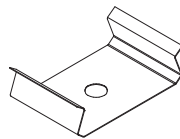
Code: OA-57
Description: Light Profile - For LED Strip Lighting Fitting to MDF with out mounting clips
Length: 4.0m
Colour: Mill Finish, Satin Anodised, White

Aluminium Extrusion



Code: OA-59
Description: Light Profile - For LED Strip Lighting Fitting to MDF with mounting clips OF-9
Length: 4.0m
Colour: Mill Finish, Satin Anodised, White

Retaining Clip



Code: OF-9
Description: Mounting clips for LED light extrusion OA-59
Material: Stainless Steel

Diffuser – flat



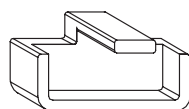
Code: OPE-29
Description: Acrylic Light Shield Diffuser
Length: 4.0m
Colour: Clear and Opal UV Resistant

Diffuser – radius



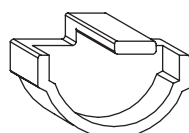
Code: OPE-30
Description: Acrylic Light Shield Diffuser
Length: 4.0m
Colour: Clear and Opal UV Resistant

Square end cap



Code: OPC-29
Description: Square end cap to fit extrusion OA-59 and diffuser OPE-29
Material: ABS
Length: 4.0m
Colour: White, Grey, Black

Radius end cap



Code: OPC-30
Description: Radius end cap to fit extrusion OA-59 and diffuser OPE-30
Material: ABS
Length: 4.0m
Colour: White, Grey, Black

ULLRICH ALUMINIUM SALES CENTRES

WHANGAREI

2 Gumdigger Place,
(09) 438 7380
whgrsls@uacl.co.nz

SILVERDALE

24 Anvil Rd,
Hibiscus Coast
(09) 427 0017
silvsales@uacl.co.nz

AUCKLAND WEST

65 The Concourse
Henderson
(09) 836 6061
hendsls@uacl.co.nz

AUCKLAND CENTRAL

151 Neilson Street
Onehunga
(09) 276 3789
onesales@uacl.co.nz

AUCKLAND SOUTH

118 Wiri Station Rd
Manukau
(09) 262 6262
alkalum@uacl.co.nz

EXPORT DIVISION

118 Wiri Station Rd
Manukau
(09) 262 6262
exports@uacl.co.nz

TAURANGA

17 McDonald St
Mt Maunganui
(07) 575 3499
taurgsls@uacl.co.nz

HAMILTON

39 - 45 Maui St, Te Rapa
(07) 849 2909
hamsls@uacl.co.nz

ROTORUA

124 Riri St
Rotorua
(07) 346 8213
rotsls@uacl.co.nz

NAPIER

Cnr Niven &
Edmundson Sts
(06) 843 3114
napsls@uacl.co.nz

NEW PLYMOUTH

77 Hurlstone Drive
(06) 759 9120
nplythsls@uacl.co.nz

PALMERSTON NORTH

8 Railway Rd
(06) 356 2007
pnthsls@uacl.co.nz

WELLINGTON

18 Cornish Street
Lower Hutt
(04) 568 8188
wgtnsls@uacl.co.nz

NELSON

6a Forests Rd
Stoke
(03) 547 4103
nelsales@uacl.co.nz

CHRISTCHURCH

9 William Lewis Drive
Sockburn
(03) 366 7939
chchsls@uacl.co.nz

TIMARU

60-64 Racecourse Rd
Washdyke
(03) 688 7649
timrsls@uacl.co.nz

DUNEDIN

391 Kaikorai Valley Rd
(03) 453 0679
dunsls@uacl.co.nz

INVERCARGILL

25 Bond St
(03) 218 4124
invsls@uacl.co.nz

For additional information on any Ullrich product either contact your Ullrich salesperson, refer to the list of branches for your nearest Ullrich Aluminium Sales Centre, or simply call our nationwide freephone number for assistance.

Phone: 0800 500 338



ULLRICH ALUMINIUM AUSTRALIA SALES CENTRES

ALBURY-WODONGA - (NSW)

28 Fallon Street,
North Albury, NSW 2640
Phone: 02 6040 8000
Email: sales.albury@ullrich.com.au

SYDNEY - (NSW)

185 - 187 Woodpark Road,
Smithfield, NSW 2164
Phone: 02 8787 7400
Email: sales.syd@ullrich.com.au

NEWCASTLE - (NSW)

6 Steel River Boulevard,
Mayfield West, NSW 2304
Phone: 02 4949 2600
Email: sales.new@ullrich.com.au

BATHURST - (NSW)

10 Bradwardine Rd,
Robin Hill, NSW 2795
Phone: 02 6334 4333
Email: sales.bathurst@ullrich.com.au

COFFS HARBOUR - (NSW)

13 Cook Drive, Coffs Harbour,
NSW 2450
Phone: 02 6652 8326
Email: sales.coffs@ullrich.com.au

CANBERRA - (ACT)

12 Sawmill Circuit,
Hume ACT 2620
Phone: 02 6260 2011
Email: sales.can@ullrich.com.au

MELBOURNE - (VIC)

893 Princes Highway,
Springvale, VIC 3171
Phone: 03 9567 7200
Email: sales.mel@ullrich.com.au

NORTHGATE - (QLD)

Building 2/125 Crockford St,
Northgate, QLD 4013
Phone: 07 3335 6700
Email: sales.northgate@ullrich.com.au

GOLDCOAST - (QLD)

24 Township Drive,
West Burleigh, QLD 4219
Phone: 07 5520 2799
Email: sales.gold@ullrich.com.au

CAROLE PARK - (QLD)

20 Ron Boyle Crescent,
Carole Park, QLD 4300
Phone: 07 3718 1400
Email: sales.bris@ullrich.com.au

CALOUNDRA - (QLD)

37 Enterprise St, Caloundra,
QLD 4551
Phone: 07 5492 8587
Email: sales.caloundra@ullrich.com.au

TOWNSVILLE - (QLD)

5 Whitehouse Street, Garbutt,
Townsville, QLD 4814
Phone: 07 4720 7100
Email: sales.town@ullrich.com.au

CARINS - (QLD)

16 Spoto Street, Woree, QLD 4868
Phone: 07 4045 6662
Email: sales.cairns@ullrich.com.au

ROCKHAMPTON - (QLD)

103 Stanley St,
Rockhampton, QLD 4700
Phone: 07 4921 4228
Email: sales.rock@ullrich.com.au

MACKAY - (QLD)

105-111 Maggiolo Drive Paget,
Mackay, QLD 4740
Phone: 07 4952 4552
Email: sales.mackay@ullrich.com.au

WIDE BAY - (QLD)

48B Lower Mountain Rd
Dundowran, QLD 4655
Phone: 07 4196 9000
Email: sales.widebay@ullrich.com.au

ADELAIDE - (SA)

868-872 Main North Road,
Pooraka, SA 5095
Phone: 08 8300 2500
Email: sales.adel@ullrich.com.au

BUNBURY - (WA)

15 Ditchingham Place,
Australind, WA 6233
Phone: 08 9725 9900
Email: sales.bunbury@ullrich.com.au

PERTH - (WA)

17 King Street,
Bayswater, WA 6053
Phone: 08 9473 4700
Email: sales.perth@ullrich.com.au

LAUNCESTON - (TAS)

86 Invermay Road,
Launceston, TAS 7250
Phone: 03 6326 3300
Email: sales.laun@ullrich.com.au

HOBART - (TAS)

123 Albert Rd, Moonah,
TAS 7009
Phone: 03 6278 0000
Email: sales.hobart@ullrich.com.au

DARWIN - (NT)

114 Reichardt Road, Winnellie,
NT 0820
Phone: 08 8947 4157
Email: sales.darwin@ullrich.com.au

For additional information on any Ullrich product either contact your Ullrich salesperson, refer to the list of branches for your nearest Ullrich Aluminium Sales Centre, or simply call our nationwide freephone number for assistance.

Phone: 1300 650 075

